

A study on the pattern of genetic inheritance of polycystic ovarian syndrome

Aims: Inheritance of polycystic ovary syndrome (PCOS) is still a controversy. Our study aims to analyze the family history of PCOS features and related metabolic disturbances including the male members to determine the mode of their inheritance.

Study design: A cross sectional study with convenient sampling.

Place and Duration of Study: Department of Medicine, Kasturba Medical College, Mangalore between 2009 and 2012.

Methodology: Demographic data such as body weight and age was recorded. Menstrual, obstetric and medical history of 85 PCOS females was collected. Presence of metabolic syndrome (MetS) was confirmed. Blood pressure and waist circumference were measured. Biochemical and hormonal estimations were done. Relevant information required for the study of 604 members of first and second generation relatives was collected. SPSS (version 17.0) was used to analyze the numerical data. Univariate analysis was done by using one-way ANOVA and *Kruskal-Wallis test* (non-parametric). $P < 0.05$ was considered statistically significant. Segregation analysis was carried out to determine the pattern of inheritance.

Results: Seventy eight percent of the PCOS patients were either overweight or obese and 98% of them had hirsutism. Approximately, 33% of them had MetS which was higher in the first generation (62%) of PCOS relatives. An equal transmission of MetS characteristics from the paternal and maternal side indicated that it was not X-linked inheritance. Segregation analysis of nine families PCOS of patients suggested that MetS inheritance was autosomal dominant although PCOS inheritance was not.

Conclusion: PCOS daughters come from families of MetS suggesting that parental MetS features may be related to the occurrence of PCOS in their off-springs.

Key words: *Polycystic ovary syndrome, Obesity, Metabolic syndrome, Inheritance*

8
9
10

1. INTRODUCTION

11 Polycystic ovary syndrome (PCOS) affects 5-10 % of the women in reproductive age group.
12 An increase in the prevalence of PCOS among Indians is also a great concern. Estimates of
13 PCOS in migrant Indians have been placed at 52% level and about 37% among the north
14 Indian women have been reported to suffer from PCOS [1,2]. Gynecologists from South
15 India believe from their experience that 25-30% of the women visiting them do suffer from
16 PCOS. However, a recent report puts the figure at 9.13% [3].

17
18
19
20
21
22
23
24
25
26
27
28
29
30
31
32
33
34
35
36
37
38
39
40
41
42
43
44
45
46
47
48
49
50
51
52
53
54
55
56
57
58
59
60
61
62
63
64
65
66
67
68
69

Genetic factors play an important role in the development of PCOS, but studies in this regard in India is scanty. Maitra *et al* [4]. conducted mutational analysis of CPY1A1 and leptin as genetic determinants of hyperandrogenicity and obesity in PCOS. A recent study has clearly demonstrated the heritable aspects of obesity and insulin resistance in PCOS even in infancy and also in the male progeny [5,6]. However, studies showing familial clustering of PCOS cases, greater concordance of symptoms of PCOS in identical twins, heritability of endocrine and metabolic features of PCOS are all compelling evidences that strongly suggest the involvement of genetic mechanism [7]. Although, search for candidate genes in PCOS has yielded some positive results, the controversy on the mode of inheritance (eg. autosomal dominance, modified autosomal dominance, X-linked, polygenic, oligogenic or multifactorial) still persists [8]. Therefore, we propose this study on the family history of PCOS subjects at length including male members, not only for PCOS but also for its related metabolic conditions to determine the pattern of inheritance of PCOS.

2. MATERIAL AND METHODS

By convenient sampling, 85 post-pubertal female subjects, preferably with a large family size, diagnosed with PCOS were inducted for the study. Institute's research ethical committee approved the study. Written consent was obtained from each of the 85 participants who were given a clear explanation of the purpose of the study. The diagnosis of PCOS was made according to the ESHRE/ASRM criteria based on the presence of two of the three following criteria: oligo- and/or anovulation (menstrual dysfunction), clinical and/or biochemical signs of hyperandrogenism and polycystic ovaries (PCO) at ultrasonogram [9].

All patients were questioned in detail regarding birth history, menstrual, obstetric and medical history. Medical history of diabetes mellitus, hypertension, cardiovascular diseases, dyslipidemia and malignancies of breast/ovary/endometrium and thyroid disorders were recorded. Also, a standard questionnaire was used to document personal history such as troublesome acne, excess sweating, excess body hair (hirsutism), male pattern hair loss, acanthosis nigricans, buffalo hump and goiter.

As a routine, *in vitro* tests for direct quantitative determination of fasting blood sugar (FBS), postprandial blood sugar (PPBS), total cholesterol (TC), triglyceride (TG) and high density lipoprotein (HDL-C) was carried out on Roche-Hitachi fully automated random access chemistry analyser (RH model P-800). Relevant hormones evaluation was conducted by Electrochemiluminescence immunoassay (ECLIA) on Cobase 411 modular immunoassay analyser. However, we are not providing any results or discussing this part of the data as it is not relevant for this communication.

Prevalence of metabolic syndrome (MetS) was also assessed by ATP-III standards [10,11]. Accordingly, MetS was diagnosed in subjects presenting with at least three of five of the following criteria: increased waist circumference (>80 cm), low serum HDL-C (<50 mg/dl in women), increased serum TG (>150 mg/dl), increased blood pressure (>130/>85 mm Hg) and high FBS (>100 mg/dl).

Relevant data of six hundred and four (604) family members of the PCOS patients was gathered from all 85 PCOS patients for analysis of the pattern of inheritance of PCOS. They were questioned for PCOS conditions and related MetS features in their first and second degree relatives and the information was recorded.

A statistical software package was used to analyse the numerical data (SPSS version 17.0). Univariate analysis was done by using one-way ANOVA and *Kruskal-Wallis test* (non-

70 parametric). $P < 0.05$ was considered statistically significant. The results are expressed as
71 Mean \pm SD. Segregation analysis was carried out to determine the inheritance of PCOS.

72

73 3. RESULTS

74

75 The mean age of the PCOS subjects in this study was 27.9 ± 7.1 years. The average age of
76 onset of menarche was 12.8 ± 1.5 years. Body mass index (BMI) based grouping (for Asians)
77 of the PCOS patients is shown in Table 1 along with blood pressure and waist circumference
78 data. It was obvious that 34%, 44% and a very small group of the subjects were in
79 overweight, obese and underweight categories, respectively.

80

81

82 **Table1. Body mass index (BMI), waist circumference (WC) and blood pressure (BP) of**
83 **subjects grouped on BMI basis.**

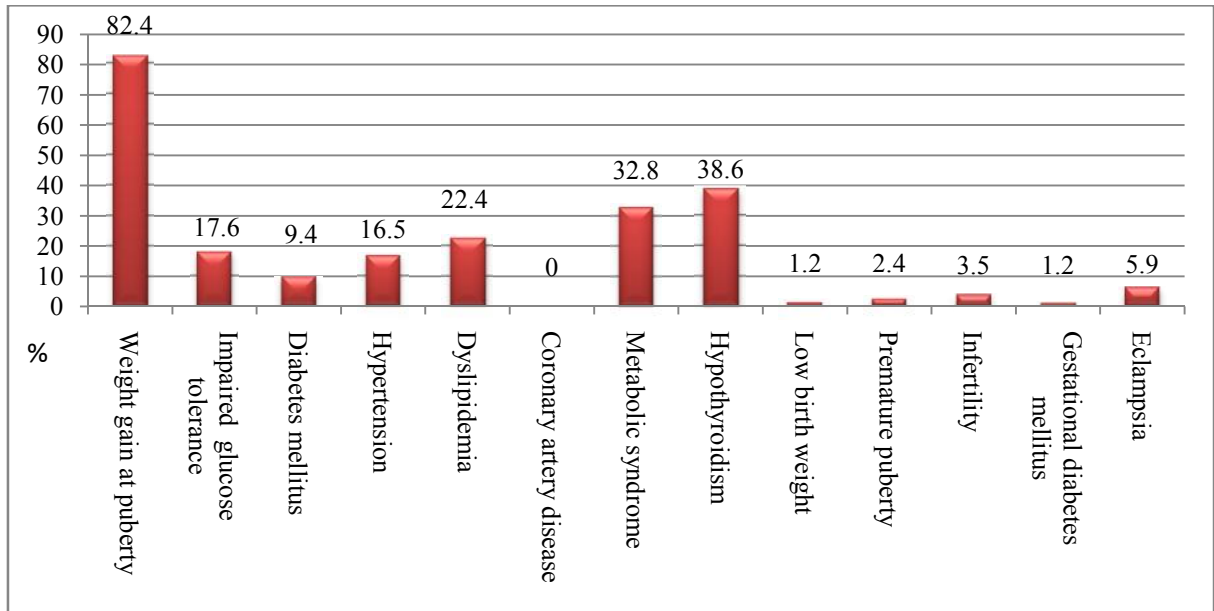
BMI Range	n	%	BMI (Kg/m ²)	WC (cm)	Systolic BP (mmHg)	Diastolic BP (mmHg)
<18.5 (Underweight)	3	3.5	17.0 ± 0.8	63.7 ± 8.0	110.0 ± 17.3	66.7 ± 11.5
18.5-22.9 (Normal)	16	19	20.9 ± 1.4	75.4 ± 8.8	126.2 ± 6.1	79.3 ± 7.7
23-27.4 (Overweight)	29	34	25.6 ± 1.4	81.4 ± 6.5	124.4 ± 9.8	78.2 ± 6.0
27.5-34.9 (Obese I)	32	38	30.6 ± 1.8	90.0 ± 9.4	133.0 ± 12.7	83.1 ± 8.5
>35 (Obese II)	5	6	38.9 ± 4.1	111.2 ± 19.9	140.0 ± 20.0	88.0 ± 8.3
				$p < 0.000$	$p < 0.001$	$p < 0.001$

84

85

86 Figure 1 represents certain clinical conditions suffered by the PCOS patients. More than 1/3
87 of the patients had shown hypothyroidism and MetS features and a considerable number of
88 them had diabetes mellitus, hypertension and dyslipidemia. More than 80% of the subjects
89 had gained extra body weight at puberty.

90



91

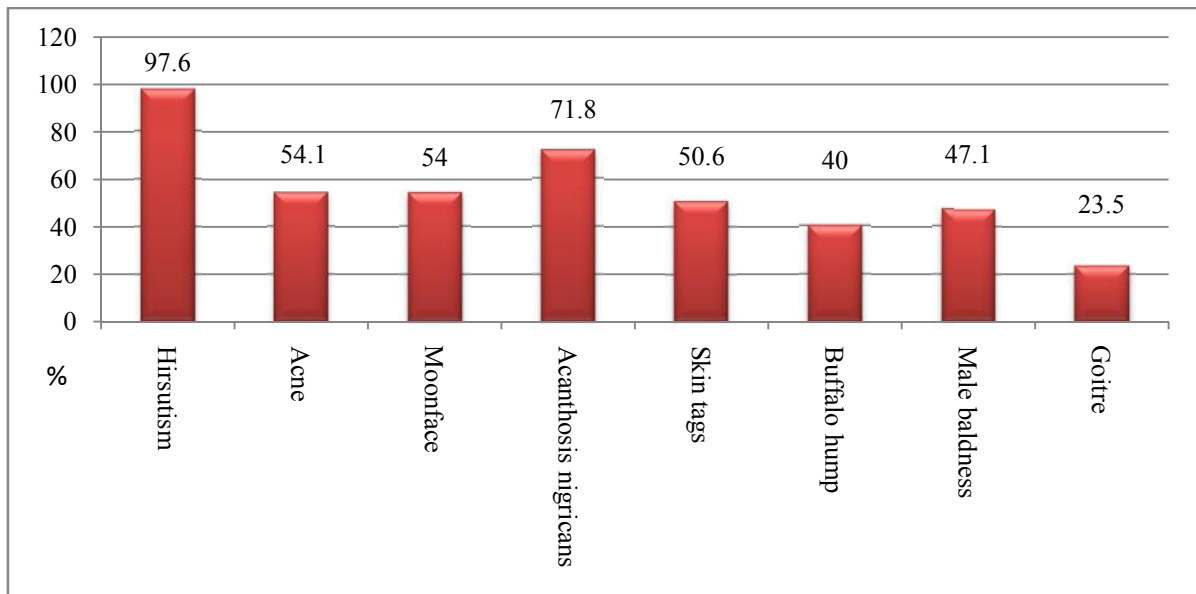
92 **Figure1. Clinical conditions (%) associated with the PCOS patients**

93

94 Figure 2 shows the clinical features of 85 PCOS patients where 98% of them had hirsutism,
 95 a characteristic of clinical hyperandrogenemia resulting in PCOS.

96

97



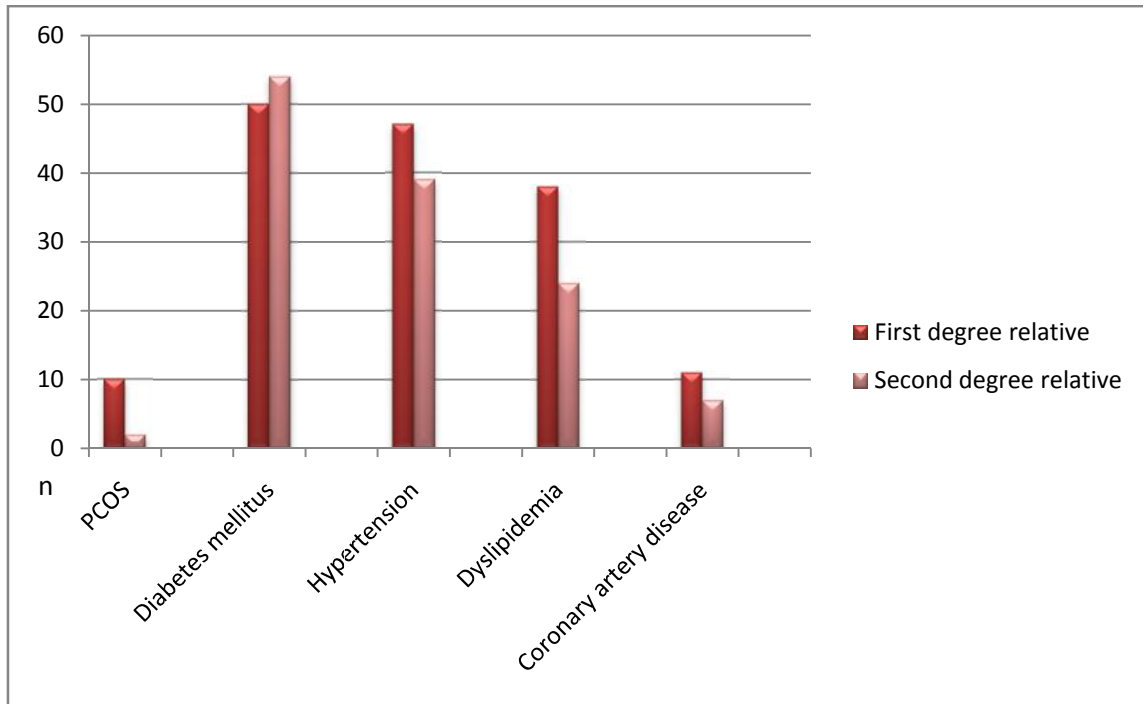
98

99

100 **Figure 2. Clinical features (%) of the PCOS patients.**

101
102
103
104
105
106
107

Figure 3 depicts the prevalence of PCOS and related MetS characteristics and coronary artery disease (%) in the first and second degree relatives of the PCOS patients in this study. The prevalence of all the conditions (except diabetes mellitus) were relatively less (statistically significant except for diabetes mellitus and coronary artery disease) in second degree relatives as compared to the first.



108
109

110 **Figure 3. Frequency of clinical conditions (%) in first and second degree relatives of**
111 **PCOS patients.**

112
113
114
115
116
117
118
119
120
121
122
123
124
125
126
127

Table 2 shows the presence of some clinical conditions in the relatives of the PCOS subjects in detail as reported by them.

129 **Table 2. Distribution of polycystic ovary syndrome (PCOS) patients' relatives with of**
 130 **some clinical conditions; CAD = coronary artery disease.**
 131

PCOS patients' relatives	n	Diabetes mellitus	Hypertension	Dyslipidemia/ Obesity	CAD	PCOS
		n (%)	n (%)	n (%)	n (%)	
Father	65	23 (35.4)	23 (35.4)	14 (21.6)	7 (10.8)	-
Mother	65	20 (30.8)	18 (27.7)	13 (20.0)	2 (3.1)	5
Brother	57	4 (7.0)	3 (5.3)	3 (5.3)	2 (3.5)	-
Sister	49	3 (6.1)	3 (6.1)	8 (16.3)	-	5
Father's Brother	28	15 (53.6)	5 (17.9)	7 (25.0)	3 (10.7)	-
Father's Sister	25	5 (20.0)	5 (20.0)	5 (20.0)	-	-
Mother's Brother	21	8 (38.1)	4 (19.0)	1 (4.8)	1 (4.8)	-
Mother's Sister	34	9 (26.5)	6 (17.4)	8 (23.5)	1 (2.9)	-
Grand Father (P)	65	3 (4.6)	6 (9.2)	1 (1.5)	1 (1.5)	-
Grand Mother(P)	65	4 (6.2)	3 (4.6)	-	-	-
Grand Father (M)	65	4 (6.2)	3 (4.6)	1 (1.5)	1 (1.5)	-
Grand Mother(M)	65	6 (9.2)	7 (10.8)	1 (1.5)	-	-

132

133

134

135

136

137

138

139

140

141

142

143

144

Family pedigree analysis of 9 PCOS subjects with large families in our study showed that the mothers of three PCOS probands had PCOS. We also found PCOS in the siblings of three of the PCOS subjects with no history of PCOS in their mothers. Moreover, we also found MetS features being present in the parents and in most of the second degree family members in three of the PCOS probands who had one or more associated MetS characteristics at an early age. The segregation ratio (observed:expected) was consistent with autosomal dominant inheritance in all these cases. Figures 4a and 4b represents a sample of the pedigree tree of two of our PCOS patients.

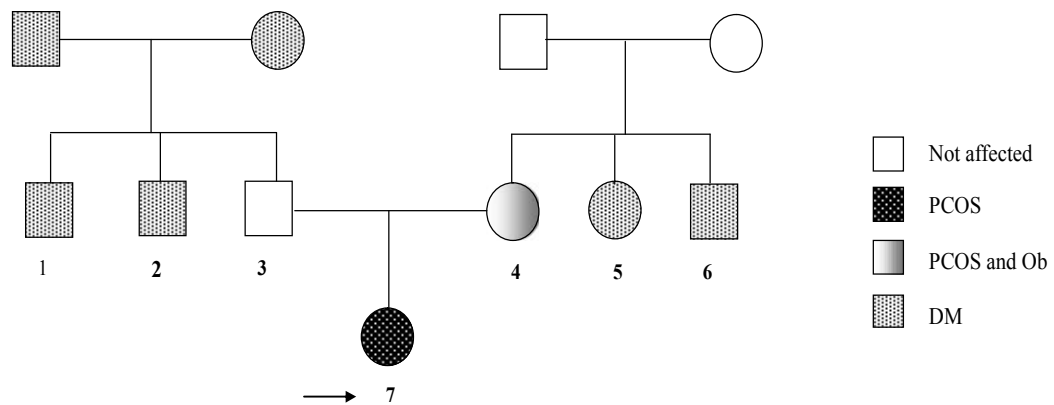


Figure 4a. The proband 7 in this family had polycystic ovary syndrome (PCOS). The proband's mother 4 had PCOS and obesity (Ob). Proband's paternal uncle (1) and maternal aunt (5) had diabetes mellitus (DM). Paternal grandparents had DM.

145
146

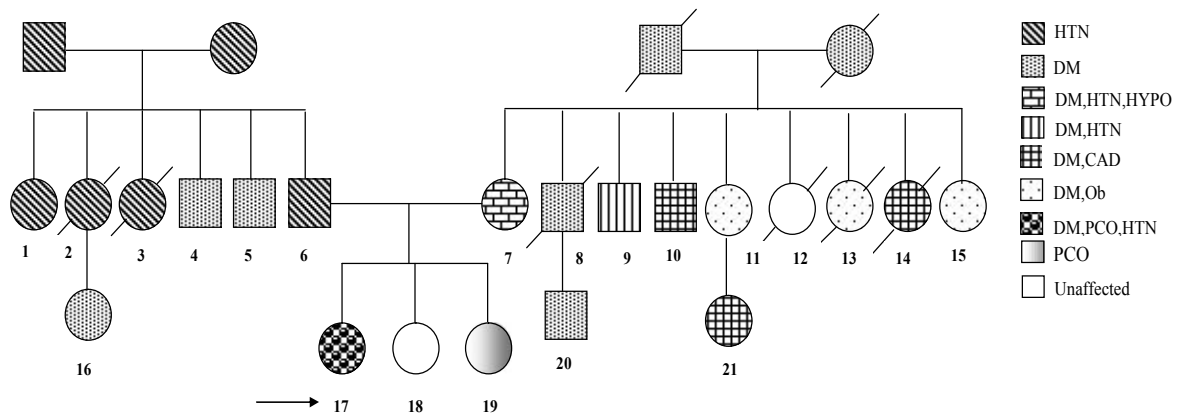


Figure 4 b. In this large family, the proband 17 had polycystic ovary (PCO), obesity (Ob), hypertension (HTN) and infertility (INF). One of her sisters (19) had PCO and Ob. The proband's mother (7) suffered from diabetes mellitus (DM), HTN and hypothyroidism (HYPO) and father (6) had HTN. DM was found in three maternal uncles (8,9,10) and three maternal aunts (11,13,15) of the proband. All maternal aunts were obese and two of them (11,12) were dead due to breast carcinoma. Proband's maternal grandparents had DM and paternal grandparents suffered from HTN. Three paternal aunts (1,2,3) had HTN and two paternal uncles (4,5) had DM. The off-springs of paternal aunt and maternal uncle (16, 21) also had features of metabolic syndrome (MetS).

147
148

150 4. DISCUSSION

151 PCOS has become a 'family affair'. Susceptibility to inheritance of PCOS seems to be
152 equally probable from both the maternal and paternal side of the family. It is estimated that a
153 woman's risk for developing PCOS is higher, if she has an affected sister, but at a lower risk,
154 if other family members are affected [12]. Though, the genetic studies have not yet
155 determined the pattern of heredity, most of the family studies have shown a simple
156 Mendelian pattern of inheritance consistent with an autosomal dominant or X-linked pattern
157 of inheritance [13]. Positive findings have been reported with candidate genes involved in
158 both association and linkage studies [14]. However, twin studies on PCOS have revealed an
159 incidence of 50% that suggest a complex pattern of polygenic inheritance [15]. On the other
160 hand, a large family study (St Mary's family) from Franks' group concluded that PCOS is
161 inherited on an oligogenic basis [16].

162
163 The high incidence of PCOS in first degree relatives of the PCOS affected members in some
164 studies [13,15,17-18]. suggests a dominant pattern of inheritance based on the assumption
165 that at least 50% of the siblings of the PCOS probands are affected with the disorder [13]. A
166 few studies over the last 20 years have drawn attention to the phenomenon of familial
167 clustering of PCOS cases [19-23]. In some of these studies, segregation analysis gave
168 results that were consistent with autosomal dominant inheritance [19,22-23]. In one study by
169 Govind *et al.*, that included 29 families of PCOS probands, segregation analysis showed that
170 52% of the mothers, 21% of the fathers, 66% of the sisters and 22% of brothers were
171 affected with PCOS features that supported an autosomal dominant inheritance pattern of
172 PCOS in families, perhaps caused by the same gene [13]. In another study, the prevalence
173 of polycystic ovaries among siblings was too high to be explained by a simple dominant
174 model [21]. Legro *et al.*, studied 80 PCOS probands and reported that 36 of 80 (45%) sisters
175 were affected on the basis of hyperandrogenemia [24]. Another study has reported a
176 prevalence of 50% hirsutism cases among the affected sisters of PCOS [17]. They also have
177 shown that some characteristics of PCOS inherited were in different proportion; e.g. PCO
178 73%, hyperandrogenemia 87% and hyperinsulinemia 66%. A report by Givens *et al.*, has
179 suggested an X-linked mode [20]. Wilroy *et al.*, showed that 47% of female offspring of
180 PCOS patients in their study were affected. Among the offspring of males with an elevated
181 LH/FSH ratio, 89% of daughters were affected [25]. The finding is thus consistent with X-
182 linked dominant inheritance.

183
184 Natasha *et al* [26] have tested the hypotheses that parental MetS would be related to the
185 PCOS phenotype in their offspring and that MetS prevalence would be increased in
186 adolescents with PCOS. Thirty-six adolescent girls with PCOS and their first degree relatives
187 were evaluated for MetS characteristics in their study concluded that familial factors related
188 to paternal MetS seem to be fundamental to the pathogenesis of PCOS.

189
190 Our study revealed that a total of 10 members from the families of 85 PCOS probands,
191 referred to as first generation and two members from the second generation had PCOS
192 features. We also diagnosed MetS in nearly one third of them. However, when we analyzed
193 MetS characteristics associated with PCOS, we found a very high association suggesting
194 autosomal dominant transmission. Break up data of the family history showed nearly 20% of
195 the fathers and 20% of mothers of PCOS probands having diabetes mellitus, hypertension
196 obesity/dyslipidemia each. Among the siblings of PCOS probands, nearly 10% of them had
197 diabetes mellitus, hypertension, and obesity/dyslipidemia. However, among the uncles,
198 aunts and grandparents of our PCOS probands, the percentage of diabetes mellitus,
199 hypertension, and obesity/dyslipidemia was less than 10%. When any one of the MetS

200 features such as diabetes mellitus , hypertension or dyslipidemia was considered, we found
201 a prevalence of 62% (146/236) and 33% (124/368) among the first degree and second
202 degree relatives of our PCOS subjects respectively. This proves the autosomal dominant
203 inheritance of the MetS features in PCOS.

204
205

5. CONCLUSION

206 The problems in genetic studies are manifold [15,27-28]. Although, several positive reports
207 are available, no gene or genes is universally accepted as important in the pathogenesis of
208 PCOS, though the numbers of candidate genes are steadily increasing. The current view
209 supports the notion that PCOS is likely to represent a complex oligogenic trait with multiple
210 genetic defects [29]. Despite these shortcomings, the study of familial aggregates has
211 consistently suggested that the mode of inheritance to be dominant.
212 In our study there was an equal transmission of MetS characteristics from the paternal and
213 maternal side indicating that it is not X- linked inheritance. Although, our results do not
214 demonstrate the autosomal dominant pattern of inheritance of PCOS, the first degree
215 relatives of the PCOS probands had metabolic characteristics indicating autosomal pattern
216 of inheritance, suggesting that parental MetS features may be related to their off-springs.
217 Such manifestations may be influenced by age, diet and environmental factors. In this
218 context, the suggestion that PCOS should be treated as a quantitative trait disorder which
219 does not necessarily imply a truly polygenic aetiology because it would be possible to
220 explain the variable phenotype on the basis of a small number of key causative genes (a so-
221 called oligogenic basis for disease) involved in androgen secretion and insulin
222 secretion/action in conjunction with environmental, particularly nutritional factors should be
223 noted [30].

224
225
226
227

REFERENCES

- 228 1. Allahbadia GN, Merchant R. Polycystic ovary syndrome in the Indian continent. Semin
229 Reprod Med 2008; 26: 22-34. Thieme Medical Publisher, Inc, New York.
- 230 2. Dasgupta S, Mohan Reddy B. Present status of understanding on the genetic etiology of
231 polycystic ovary syndrome. J Postgrad Med 2008; 54: 115-125.
- 232 3. Nidhi Ram, Padmalatha V, Nagarathna R, Ram A. Prevalence of polycystic ovarian
233 syndrome in Indian adolescents. Journal of Pediatric and Adolescent Gynecology. 2011;
234 24(4):223-227.
- 235 4. Maitra A, Pusalkar M, Gorkal J, Meherji P. Mutational analysis of CPY11A1 and Leptin as
236 genetic determinants of hyperandrogenicity and obesity in PCOS: study in an Indian cohort
237 group. International congress series 1271:2004, p. 38-41. <http://www.ics-elsevier.com>
- 238 5. Kalra A, Nair S, Rai L. Association of obesity and insulin resistance with dyslipidemia in
239 Indian women with polycystic ovarian syndrome. Indian J Med Sci 2006; 60:447-453.
- 240 6. Recabarren SE, Smith R, Rios R, Maliqueo M, Echiburú B, Codner E, et al. Metabolic
241 profile in sons of women with polycystic ovary syndrome (PCOS). J Clin Endocrinol Metab
242 2008; 93:1820–1826.
- 243 7. Vink JM , Sadrzadeh S, Lambalk CB, Boomsma DI . Heritability of PCOS in Dutch twin
244 family study. J Clin Endocrinol Metab 2006; 91: 2100-2104.
- 245 8. Sheikkha MH, Kalantar SM, Ghasemi MD. Genetics of polycystic ovary syndrome. Iranian
246 J Repro Med 2007; 5: 1-5.
- 247 9. Zawadzki JK, Dunaif A. *Diagnostic criteria for polycystic ovary syndrome: towards a*
248 *rational approach. In: Dunaif A, Givens JR, Haseltine F, Merriam GR, eds. Polycystic ovary*
249 *syndrome. Boston: Blackwell; 1992:377–384.*

- 250 10. Executive Summary of the Third Report of the National Cholesterol Education Program
251 (NECP), Expert Panel on Detection, Evaluation and Treatment of High Blood Cholesterol in
252 Adults (Adult Treatment Panel III). Journal of the American Medical
253 Association 2001; 285: 2486–2497.
- 254 11. Bonora E, Kiechl S, Willeit J, Oberhollenzer F, Egger G, Bonadonna RC, et al. Metabolic
255 syndrome: epidemiology and more extensive phenotypic description. Cross-sectional data
256 from the Bruneck study. International Journal of Obesity-Related Metabolic
257 Disorders 2003; 27: 1283–1289.
- 258 12. Xita N, Georgiou I, Tsatsoulis A. The genetic basis of polycystic ovary syndrome. Eur J
259 Endocrinol 2002; 147: 717–725.
- 260 13. Govind A, Obhrai MS, Clayton RN. Polycystic ovaries are inherited as an autosomal
261 dominant trait: analysis of 29 polycystic ovary syndrome and 10 control families. J Clin
262 Endocrinol Metab 1999; 84: 38–43.
- 263 14. Waterworth DM, Bennett ST, Gharani N, McCarthy MI, Hague S, Batty S, et
264 al. Williamson R. Linkage and association of insulin gene VNTR regulatory polymorphism with
265 polycystic ovary syndrome. Lancet 1997; 349: 986–990.
- 266 15. Jahanfar S, Eden JA, Warren P, Seppälä M, Nguyen TV. A twin study of polycystic
267 ovary syndrome. Fertil Steril 1995; 63: 478–486.
- 268 16. Franks S, Gharani N, Waterworth D, Batty S, White D, Williamson R, et al. The genetic
269 basis of polycystic ovary syndrome. Hum Reprod 1997; 12: 2641–2648.
- 270 17. Norman RJ, Maasters S, Hague W. Hyperinsulinemia is common in family members of
271 women with polycystic ovary syndrome. Fertil Steril 1996; 66: 942–947.
- 272 18. Legro RS. Polycystic ovary syndrome, phenotype and genotype. Endocrinol and Metab
273 Clin North Am 1999; 28: 379–396.
- 274 19. Cooper HE, Spellacy WN, Prem KA, Cohen WD. Hereditary factors in the Stein–
275 Leventhal syndrome. Am J Obstet Gynecol 1968; 100: 371–387.
- 276 20. Givens JR. Familial polycystic ovarian disease. Endocrinol Metab Clin North Am 1988;
277 17: 771–781.
- 278 21. Hague WM, Adams J, Reeders ST, Peto TE, Jacobs HS. Familial polycystic ovaries: a
279 genetic disease? Clin Endocrinol 1988; 29: 593–605.
- 280 22. Lunde O, Magnus P, Sandvik L, Hoglo S. Familial clustering in the polycystic ovarian
281 syndrome. Gynecol Obstet Invest 1989; 28: 23–30.
- 282 23. Carey AH, Chan KL, Short F, White D, Williamson R, Franks S. Evidence for a single
283 gene effect causing polycystic ovaries and male baldness. Clin Endocrinol 1993; 38: 653–
284 658.
- 285 24. Legro RS, Driscoll D, Strauss JF 3rd, Fox J, Dunaif A. Evidence for a genetic basis for
286 hyperandrogenemia in polycystic ovary syndrome. Proc Nat Acad Sci USA 1998; 95: 14956–
287 14960.
- 288 25. Wilroy RS Jr, Givens JR, Wiser WL, Coleman SA, Andersen RN, Summitt RL.
289 Hyperthecosis: an inheritable form of polycystic ovarian disease. Birth Defects Orig Artic Ser
290 1975; 11, 81–85.
- 291 26. Natasha IL, Elizabeth EB, Masha K, Robert LR. Relationship of adolescent polycystic
292 ovary syndrome to parental metabolic syndrome. J Clin Endocrinol Metab 2006; 91: 1275–
293 1283.
- 294 27. Goodarzi MO. Looking for polycystic ovary syndrome genes: rational and best strategy.
295 Semin Reprod 2008; Med 26: 5–13.
- 296 28. Kimura I, Togashi K, Kawakami S, Nakano Y, Takakura K, Mori T, et al. Polycystic
297 ovaries implications of diagnosis with MR imaging. Radiology 1996; 201: 549–552.
- 298 29. Urbanek M, Du Y, Silander K, Collins FS, Steppan CM, Strauss III
299 JF, et al. Variation in resistin gene promoter not associated with polycystic ovary syndrome.
300 Diabetes 2003; 52: 214–217.

301 30. Banaszewska B, Spaczynski RZ, Pelez M, Pawelczyk L. Incidence of elevated LH/FSF
302 ratio in polycystic ovary syndrome women with normo- and hyperinsulinemia. Ann Acad Med
303 Bialostocensis 2003; 48: 131-134.
304